

Moisture-resistant single control pressure switches

DESCRIPTION

Four factory set models are available for hydraulic pressures up to 2000 psi. All are single pole double throw type (NEMA 4) and are both UL & CSA listed. Each comes complete with a sealed 3-wire cable that is five feet long.

OPERATION

When pressure exceeds the set point, the internal contacts transfer (N.O. closes and N.C. opens). This can be used to send an alarm signal to alert either a high, or low pressure condition. When the abnormal condition is corrected, the contacts return to their normal state.

SPECIFICATIONS and ORDERING INFORMATION

Moisture-Resistant Pressure Switches / psi (bars) 5 AMP Resistive 125/250 VAC or 50 VDC

Max. Hydraulic Pressure	Adjustment Range, Rising	Factory Setting	To Order Use Part No.
2000 (138)	50 to 2000 (3 to 138)	50 (3)	542-210-200
4700 (324)	400 to 4700 (28 to 324)	750 (52)	542-210-107
4700 (324)	400 to 4700 (28 to 324)	1150 (79)	542-210-120
4700 (324)	400 to 4700 (28 to 324)	2000 (138)	542-210-117

ADJUSTMENT

The adjustment procedure for the high-pressure switch is as follows:

WARNING

- ? Disconnect and lock out all power from the assembly before attempting disassembly. Serious injury may result from electrical shock.

Moisture Resistant, Adjustable Pressure Switches

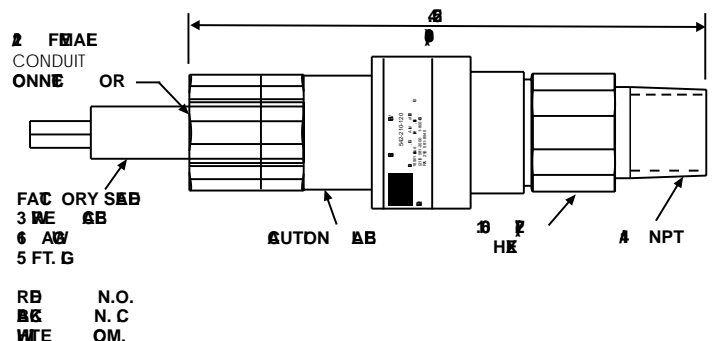


- ? To avoid possible system damage, change the blowout disc or relief valve setting to match the new pressure switch setting.

- a. Turn off electrical power to the lube system.
- b. Connect control to pressure source.
- c. With power disconnected, slide cover toward electrical terminations while twisting it to overcome friction.
- d. Connect power to terminals or leads.
- e. Insert screwdriver into adjustment slot and turn left to increase setting or right to decrease setting.

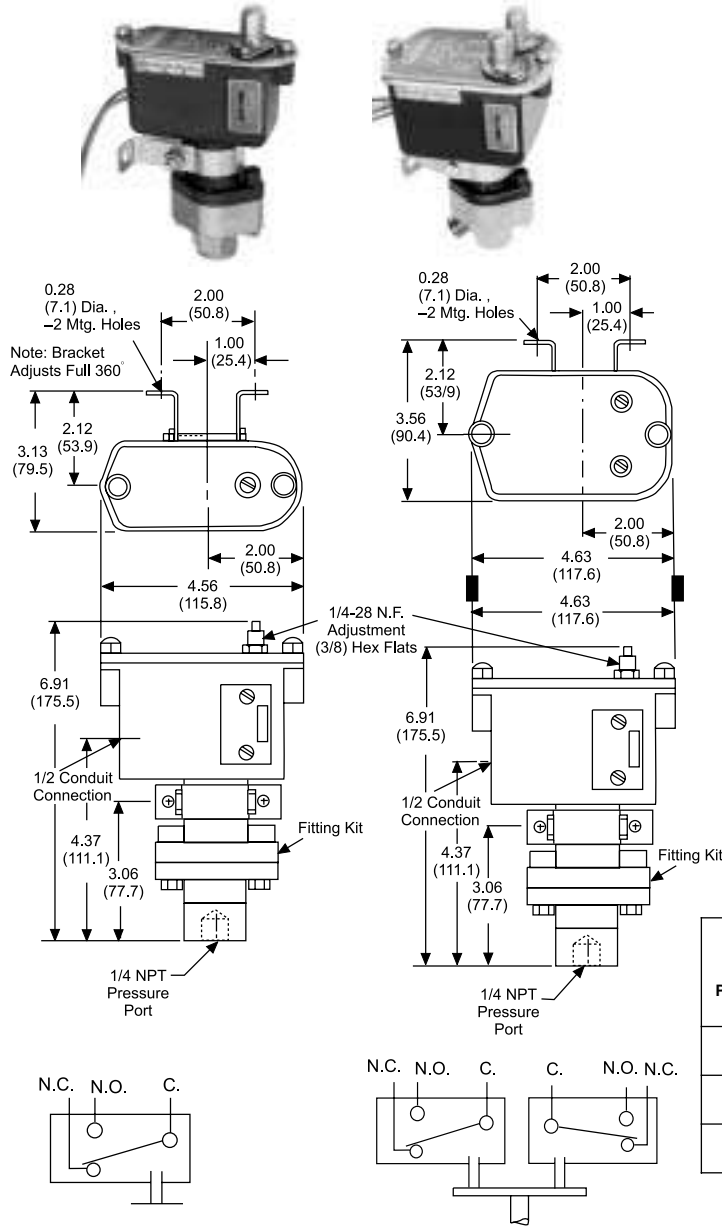
For setting on rise, apply desired pressure and turn adjustment left until switch clicks (Circuit across N.O. and COM. terminals closes). For setting on fall, apply pressure equal to normal system operating pressure. Reduce source pressure to set point value. Turn adjustment right until switch clicks (circuit across N.C. and COM. closes).

- f. After completing adjustments, slide cover closed over adjustment compartment. Recheck set point.



Trabon® Pressure Switches

High-Low, Adjustable Pressure Switches (Single and Dual)



DESCRIPTION: Up to three models of each configuration for pressures up to 7,000 PSI (483 bars). UL listed single-pole, double-throw snap action switching elements with automatic reset by microswitch snap-action. NEMA Type 3 weather-proof enclosures. Maximum electrical rating (continuous inductive) is 10 amperes / 125 or 250 volts AC or 0.5 amp / 30 volts DC. Approximate weights are 2.5 lb. (1.1 kg.) for the single-control models and 3.0 lb. (1.4 kg.) for the dual-control models. Switch wire leads for the single-control models are 3 #18 AWG wires, each approx. 18" (45.7 cm) long; dual-control models have 6 #18 AWG wires each approx. 18" (45.7 cm) long.

OPERATION: When pressure exceeds the trip setting, it forces the actuator piston against the microswitch button, activating the alarm. Signal continues until pressure is relieved and piston returns to its original position. Reset is automatic.

ADJUSTMENT: Remove the adjusting screw cover(s). Turn self-locking adjustment screw clockwise to reduce the pressure point or counter-clockwise to increase it. (On the dual switch, there are two screws—one for each line. Each screw must be set to the pressure desired.) Replace and secure cover(s).

PERFORMANCE and ORDERING INFORMATION

Single-Setting Models Ratings-PSI (BARS)

Proof Pressure	Adjustable Range				Actuation Valve Differential *	To Order, Use Part No.
	Decreasing		g Increasein			
	Min.	Max.	Min.	Max.		
3000 (207)	15 (1)	185 (13)	18 (1)	200 (14)	3 to 15 (0.2 to 1)	507-508-000
7000 (483)	125 (9)	1400 (97)	135 (9)	1500 (103)	10 to 60 (0.7 to 4)	507-509-000
7000 (483)	250 (17)	2775 (191)	280 (19)	3000 (207)	30 to 225 (2 to 16)	507-507-000

Dual-Control Models Ratings-PSI (BARS)

Proof Pressure	Adjustable Range				Actuation Valve Differential *	To Order, Use Part No.
	Decreasing		g Increasein			
	Min.	Max.	Min.	Max.		
3000 (207)	35 (2)	375 (26)	40 (3)	400 (28)	5 to 25 (0.3 to 2)	540-367-000
7000 (483)	125 (9)	1400 (97)	135 (9)	1500 (103)	10 to 60 (0.7 to 4)	507-738-000

Terminal	Switch	Terminal	Switch 1	Switch 2
Common	Purple	Common	Purple	Brown
Norm. Closed	Blue	Norm. Closed	Blue	Orange
Norm. Open	Red	Norm. Open	Red	Yellow