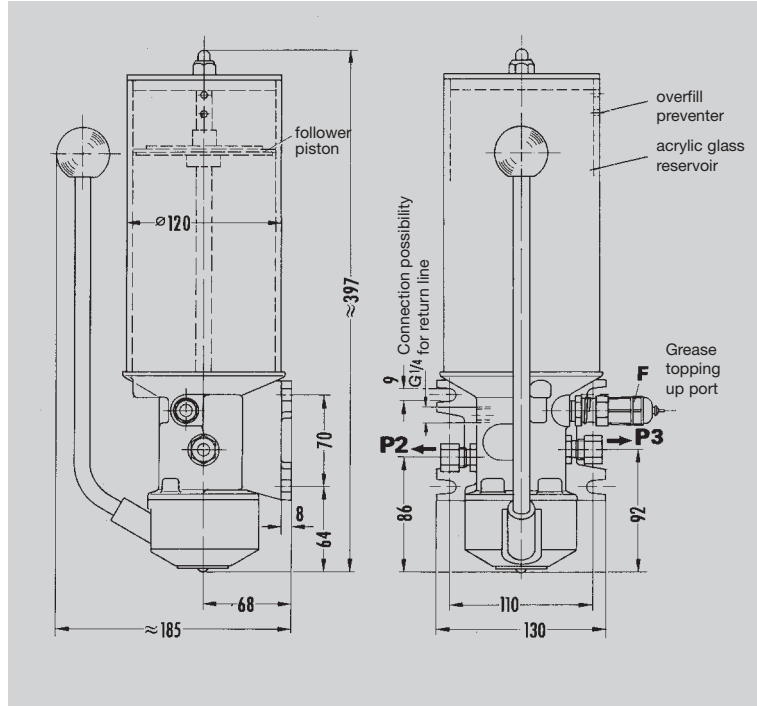
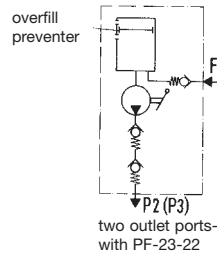


# PF-23-2, PF-23-22 with follower pistons at atmospheric pressure

manually actuated

Order No.	Number of outlet ports	Delivery rate (ccm) per port/stroke	
		P2	P3
PF-23-2	1	1.25 **	2.5 *
PF-23-22	2	1.25 **	1.25 **

Reservoir capacity ..... 1.5 kg  
 Reservoir material ..... acrylic glass  
 Operating pressure with manual force  $\approx$  20 kg ..... max. 100 bars  
 Lubricant ..... grease up to NLGI grade 2  
 Temperature range ..... +10 to +60 °C  
 Mounting position ..... vertical



\* optional with P2 or P3 (one outlet port closed by plug)

\*\* both outlet ports have to be used.

Use connection fittings with cutting-sleeve screw unions to DIN 2353.

**P2, P3** = main lines to system ( $\varnothing$  10 tubing)

Grease topped up via connection port **F**

Order No. for coupling socket: **995-001-500**

Order No. for grease topping-up pump: **169-000-004**