

PFP-23-2-S1, PFP-23-22-S1 with piston pumps pressurized by compressed air

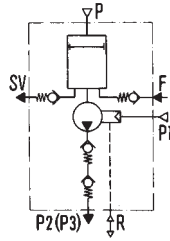
pneumatically actuated

These pumps have to be used at temperatures below +10 °C.

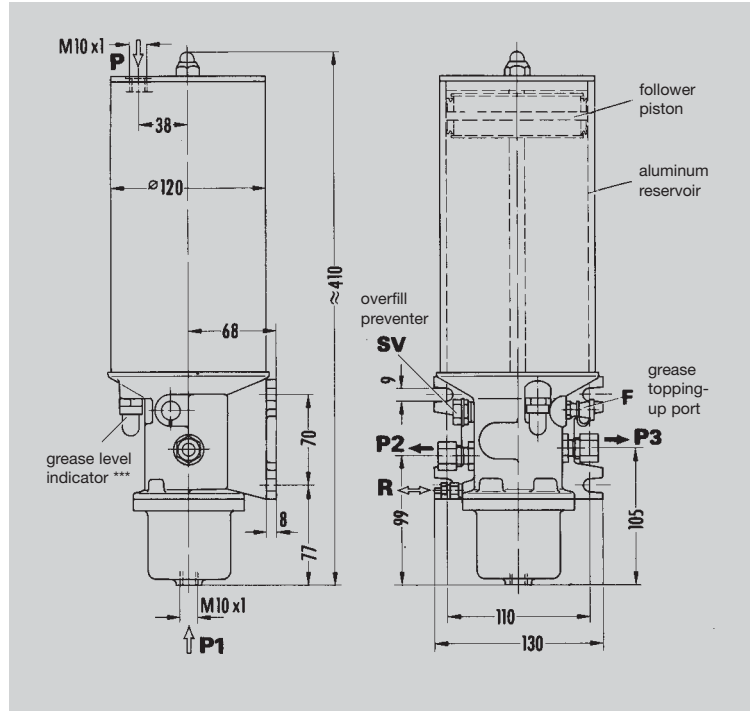
Temperature range: - 25 to + 80 °C

Order No.	Number of outlet ports	Delivery rate (ccm) per port/stroke	
		P2	P3
PFP-23-2-S1	1	2.5 *	
PFP-23-22-S1	2	1.25 **	1.25 **

Reservoir capacity 1.5 kg
 Reservoir material Al Mg5 F32
 Operating pressure as a function of the air pressure max. 190 bars
 Actuating pressure for pump and follower piston 6-10 bars
 Actuating piston with resetting spring
 Area ratio: force/lubrication 20:1
 Lubricant grease up to NLGI grade 2
 Temperature range -25 °C to +80 °C
 Mounting position vertical and horizontal



two outlet ports- with PFP-23-22-S1



- * optional with P2 or P3 (one outlet port closed by plug)
- ** both outlet ports have to be used.
- *** pin protrudes in sight glass when grease at minimum level. An electric **warning switch** can be used in addition.

Use connection fittings with cutting-sleeve screw unions to DIN 2353.

- P** = line from compressed-air network to load follower piston (max. 10 bars)
- P1** = compressed-air port
- P2, P3** = main line to system (ø 10 tubing)
- R** = air compensation line
- F** = grease topping-up port
- SV** = overfill preventer

Grease topped up via conical head nipple DIN 71412-AM10x1

Topping-up pump: Customary low-pressure grease gun, pneumatically actuated, with button-head fitting for conical head nipple DIN 71412

Warning switch

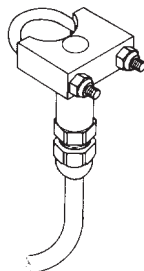
Supplementary unit for emission of an electrical signal when grease drops to minimum level.

Can be retrofitted to pumps PFP-23-2-S1 and PFP-23-22-S1

Sensor section

Reed contact load 12 W, 18 VA
 Switching voltage max. 220 V AC/DC
 Switching current max 0.8 A AC/DC
 2-core cable length = 5 m

Order No. **WS298**



Leaflet information

- 1-0107-1-US Progressive Feeders
- 1-0107-2-US Grease Pump Units (models KFA, KFG, GSJ0)
- 1-0107-3-US Grease Pump Units (models GSJ, FB, FF)
- 1-0107-5-US Piston Pumps (Typ PPU, PHU, BF)
- 1-0107-6-US Accessories for Progressive Systems
- DSK 0-003-02 E Modular Feeder PSG 2
- DSK 0-003-03 E Modular Feeder PSG 3