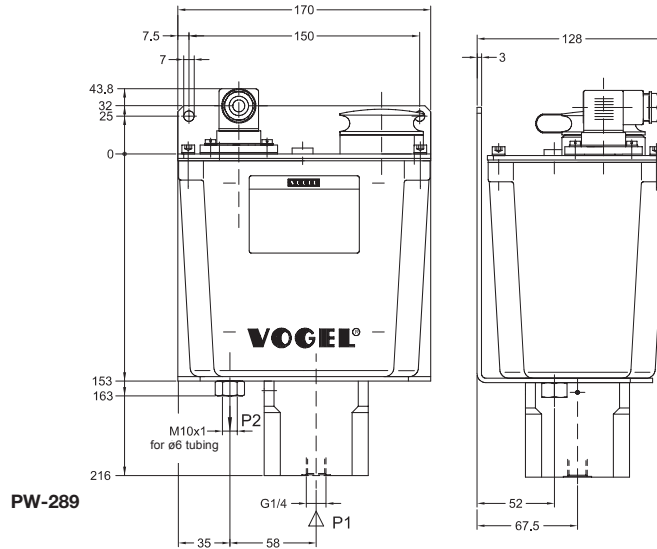


Piston pump, pneumatically actuated, with reservoir (for oil)

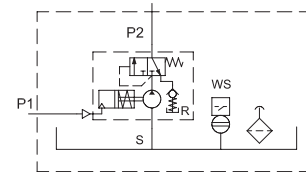
10 ccm/stroke

Reservoir capacity 1.5 l



PW-289

Graphic symbols



Order No.	Delivery rate [ccm/stroke]	Reservoir capacity [liters]	p1 permissible for distributor systems [bars]	Volume required for P1 [ccm/stroke]	with built-in float switch order No.
P-289	10	1.5	3.5 - 10	53	PW-289

Ports tapped for solderless tube connection: M10x1 for ø6 tubing.

See diagram on page 4 for pressure ratios.

A safety valve must be provided for to protect the system; e.g. **WVN200-6B40**, opening pressure 40 bars.

P1 = port for actuating medium

P2 = outlet, port for centralized lubrication system